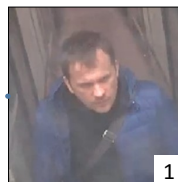
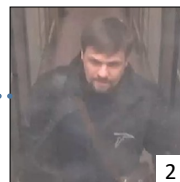


# Salisbury & Amesbury Investigation



'Petrov'



'Boshirov'

FRIDAY  
02  
MARCH

15:00hrs: 'Petrov' and 'Boshirov' arrive at London Gatwick airport on flight SU2588 from Moscow.

Suspects travel to London Victoria by train arriving at approximately 17:40hrs.

Suspects travel on public transport via Waterloo to Hotel City Safe in Bow Road, east London.



3

SATURDAY  
03  
MARCH

Suspects travel from hotel to Waterloo and then on to Salisbury train station, arriving at 14:25hrs.

Suspects return **to Salisbury station at 16:11hrs and** head back to London to their hotel in Bow Road.



4



5

SUNDAY  
04  
MARCH

Suspects return to Salisbury again on the train via Waterloo. Exit Salisbury station at 11:48hrs.

Both suspects seen on CCTV walking in Wilton Road, Salisbury at 11:58hrs.

Both suspects seen on CCTV walking in Fisherton Street, Salisbury at 13:05hrs.

Enter Salisbury train station at 13:50hrs and catch a train back to London Waterloo shortly after.

Sergei and Yulia Skripal found collapsed at 16:15hrs on a bench near the Maltings, Salisbury.

Both suspects enter security at Heathrow airport at 19:28hrs and catch flight SU2582 to Moscow.



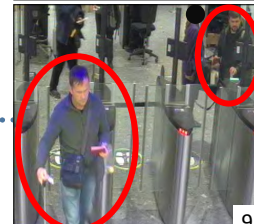
6



8

WEDNESDAY  
27  
JUNE

Charlie Rowley discovers a discarded *Nina Ricci* (counterfeit) perfume box in Salisbury.



9

SATURDAY  
30  
JUNE

Charlie Rowley opens the 'perfume' bottle and attaches the applicator at his home address.

Dawn Sturgess falls ill and an ambulance is called at 10:15hrs and Dawn is taken to hospital.

Charlie Rowley falls ill and an ambulance is also called at 18:20hrs to Muggleton Road.

